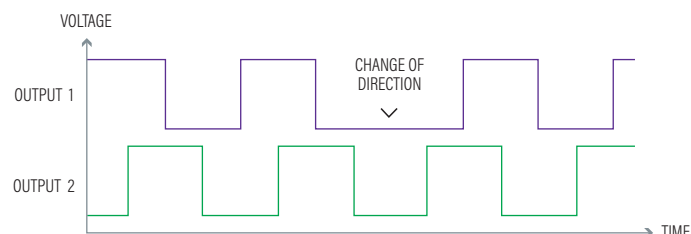
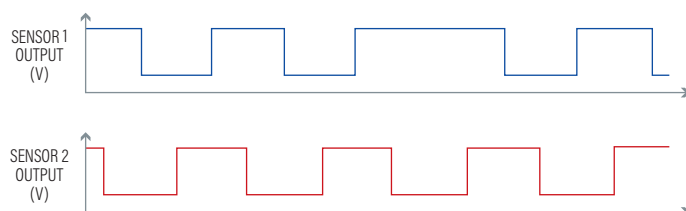
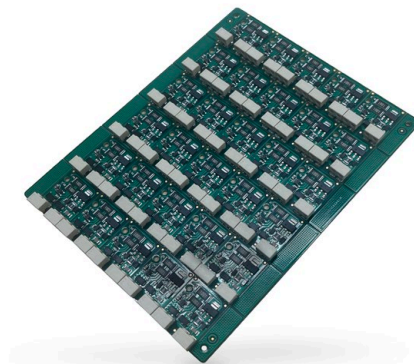


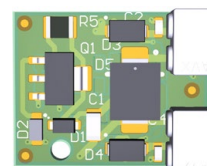
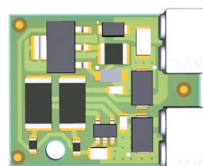
# HALL SENSOR ENCODER

Hall-effect encoder play a crucial role in ensuring precise motor control by accurately determining the speed and rotation of the motor shaft.

Our design offers flexibility, immunity to dirty working conditions, and reliable performance.



## MAIN HALL SENSOR ENCODERS FEATURES



Hall sensor	2 channels at 90°		
Accuracy per revolution	2+2 6+6		pulses
Voltage range Vcc	5 to 34		V
Reverse Supply Voltage Vrcc	-20		V
Output high Vout	Internal 10k pull up to Vcc	Internal 2,4k pull up to Vcc	
Output low Vout / Iout maximum current	0,5V and (Iol = 10mA)		
Operating Ambient Temperature TA	-40 to 80		°C
Maximum Junction Temperature Tj(max)	150		°C
Storage Temperature	-50 to 150		°C
EMC requirements	According to ISO 14982:1998	According to EN 50121-3-2	

